

Handling System for Rack Type Basket Cord Conveyor, Drive Unit - Right to Left, 400mm

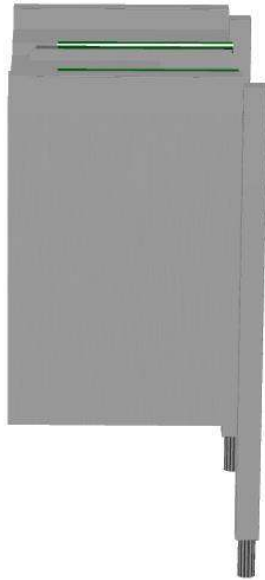
ITEM # _____

MODEL # _____

NAME # _____

SIS # _____

AIA # _____


863168 (HSBCCDURL4)

Drive Unit of cord conveyor for baskets, Right>Left operation

Main Features

- Range built in modules to allow a large number of conveyor combinations.
- Available as optional accessory a remote easy-to reach emergency-stop buttons fitted where required.
- Drive Unit can sustain up to 10 m; for longer distances Central Units are needed.
- "Key holes" and "snap on" system reduces the number of screws needed for fast and easy installation.
- Main electrical controls protected by a water-resistant stainless steel box.
- Designed to be connected with rack type dishwasher.
- The unit is part of the complete motorized handling system which can be installed either on loading and/ or unloading sides providing automatic loading and unloading the baskets for better ergonomic operation.
- The Drive Unit has 3 different variable speeds controlled by rack type dishwasher.
- Cord conveyor system generates smooth basket movement and improves hygiene.

Construction

- All surfaces smooth with polished finish.
- 40x40mm stainless steel tubular and square legs.
- Thick welded flanges for sturdy connection between the units.
- 15mm reinforced polyurethane cord, for smooth and easy running.
- Designed for 500x500mm baskets.
- 304 AISI stainless steel construction throughout.
- Delivered with legs.

Sustainability

- Variable speed.



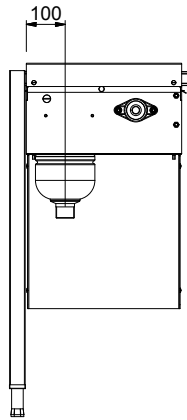
Optional Accessories

- 10 m connection cable for drive unit of cord conveyor for baskets PNC 863169
- 10 m cord for cord conveyor (mandatory - to be ordered according to the length of the complete layout) PNC 863170
- 30 m cord for cord conveyor (mandatory - to be ordered according to the length of the complete layout) PNC 863171
- 50 m cord for cord conveyor (mandatory - to be ordered according to the length of the complete layout) PNC 863172
- End limit switch for cord conveyor for basket PNC 863174
- Kit for cord welding PNC 865143
- Emergency stop kit for Rack Type Dishwasher (not for Basic handling system) PNC 865162
- Connection plate (short) for left side to connect handling system to hood type PNC 865163

APPROVAL: _____

- Connection plate (long) for front and right side to connect handling system to hood type PNC 865164
- Connection plate - handling to WT90/RT10 PNC 865165
- Kit electronic connection for motorized table and remote pre-wash module PNC 865290
- Kit electronic connection for motorized table and remote pre wash module for Dual Rinse Rack Type Dishwasher PNC 865508

Front


Electric

Electrical power, max: 0.3 kW

Key Information:
Feeding direction: from Right to Left
External dimensions, Width: 400 mm

External dimensions, Depth: 620 mm

External dimensions, Height: 910 mm

Net weight: 40 kg

Basin material: Stainless Steel AISI 304 - EN 1.4301

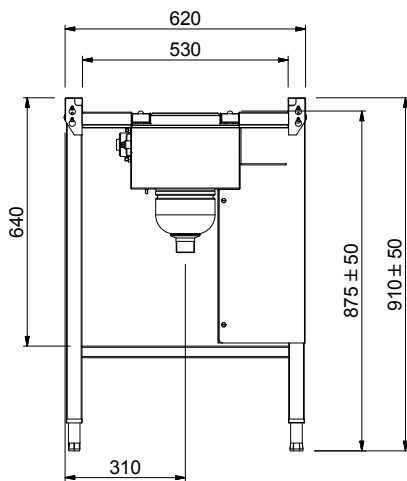
Feeding motors number: 1

Number of speeds: Variable

Max. speed: 3 m/min

Min. speed - m/min: 0.6 m/min

Side


 D = Drain
 EI = Electrical inlet (power)

Top

